

electro-magnetic clutches

CEM SERIES

SUGGESTED MOUNTING PROCEDURES

The "CEM" electromagnetic wrapped spring clutch and its drive components are designed for shaft mounting. The mounting shaft can be used as either the input or output. The "CEM" clutch may be driven by toothed belts, sprockets, and/or gears.

Figure 1. shows a typical installation of a "CEM" unit along with its drive components. The "CEM" clutch is simply supported between two aligned ball bearings. The drive clamp (MCC part # SP-1192-9) is slid along the support shaft into engagement with the sleeve slot until all of the play is removed. A light force, applied axially to the clamp, is recommended to insure removal of the end play between the several components before locking the two clamp screws securely. A high torque transmission capacity between the shaft and the clutch sleeve is thus established. The "CEM" clutch housing is restrained from rotation by the anti-rotation pin which engages a hole in the structure and the slot in the clutch housing.

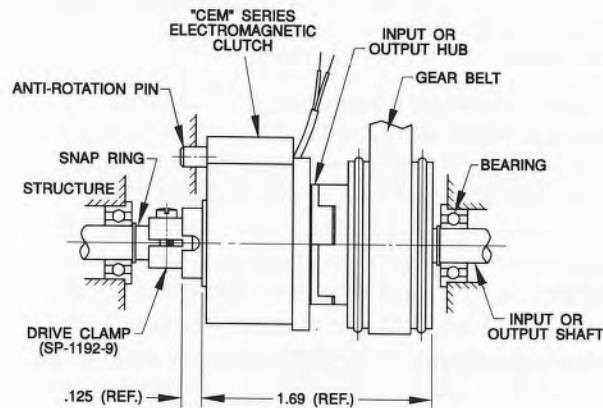


FIGURE 1.

Figure 2. is essentially the same installation as shown in figure 1. except for the drive clamp which is replaced by a drive pin inserted through the mounting shaft. The plain clamp (MCC part # SP-1192-8) is used to contain all the components axially and to remove the end play between them.

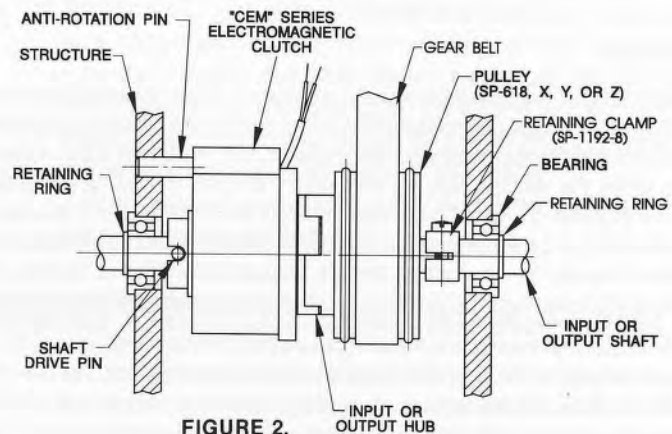


FIGURE 2.

Figure 3 shows a complete drive package designed for ease of belt replacement. This package is designed to be secured to the main structure by means of several screws. If required, a pilot centered about the axis of the shaft can be provided for effecting good alignment.

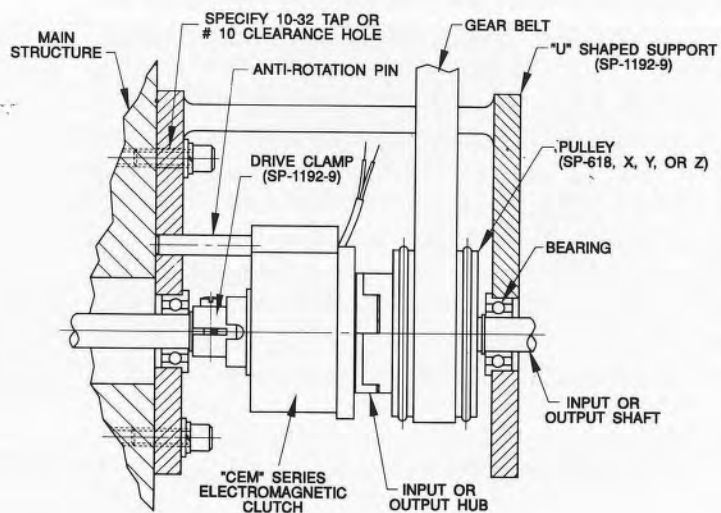


FIGURE 3.



OUR ENGINEERS WILL MODIFY DESIGNS TO MEET YOUR SPECIFIC REQUIREMENTS

MACHINE COMPONENTS CORPORATION 70 NEWTOWN RD., PLAINVIEW, NY 11803-4382

PHONE: 516-694-7222 / FAX: 516-694-7252